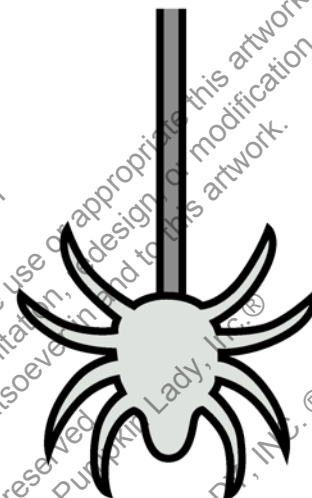
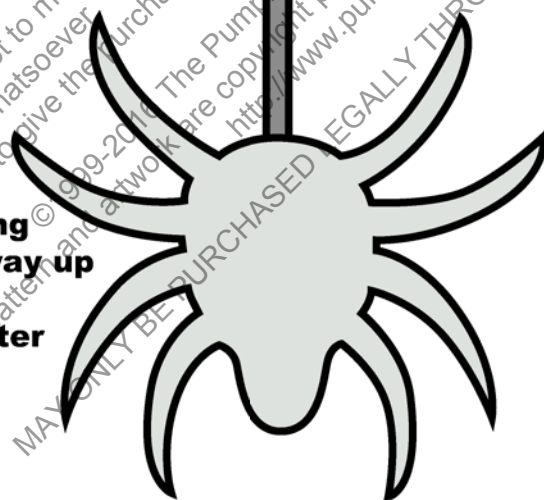


## Hangin' Around

1. First, use a shading tool or wood gouge to shave out each spider's hanging silk thread, continuing the line all the way up to the pumpkin's stem.
2. Use a carving saw to cut out the center spider.
3. Next, carve out the two tiny spiders.
4. Finally, carve the outer two spiders.



**This pattern looks great when you continue the design all the way around your pumpkin!**